

Ice Structures / China's Tour 2019 - Indoor - ice instruments on trolleys

All ice structures need to be set up on strong trolleys: 22cm High x 100cm long x 60cm width  
Trolleys must be able to carry heavy weight

All trolleys with rubber inflated wheels, all turning wheels. (see example pictures) + breaks.

全部冰乐器需要固定放在稳定的推车上，推车尺寸：高22cm x 长100cm x 宽60cm

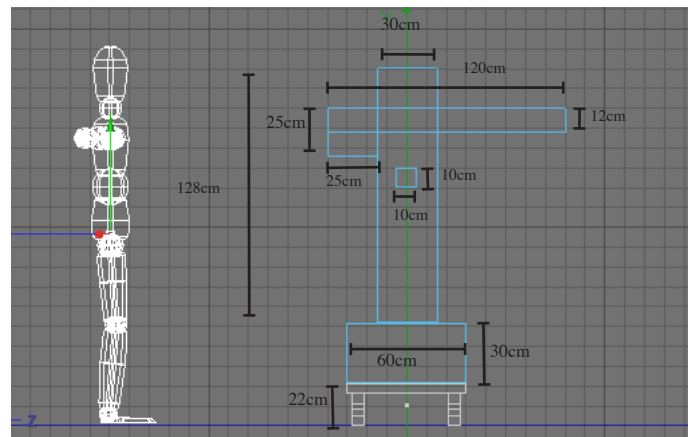
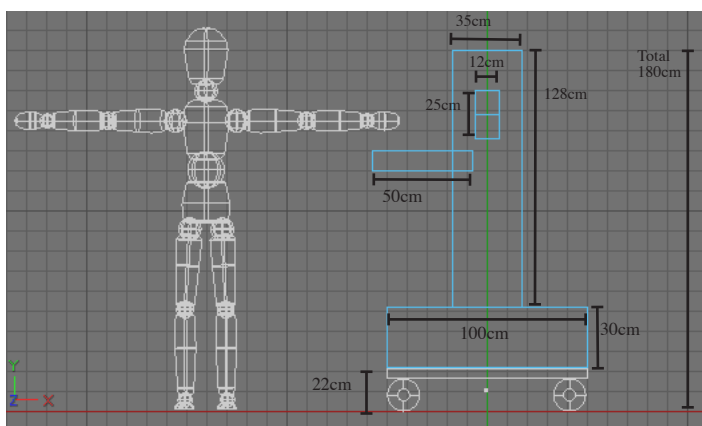
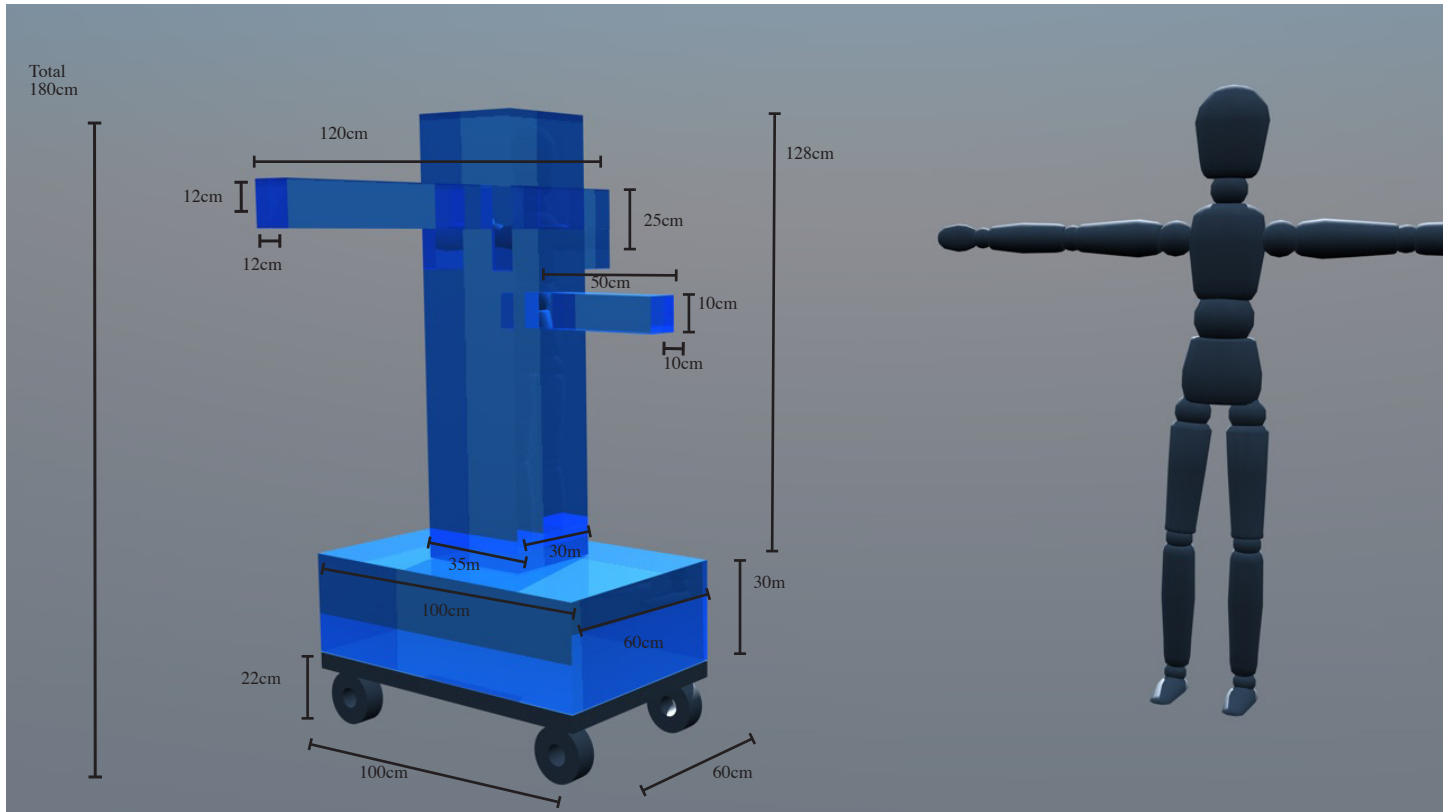
推车务必稳固且承重能力强

所有推车必须带有橡胶的轮子，且是万向轮。（请见以下参考示意图）带轮子刹车锁死装置



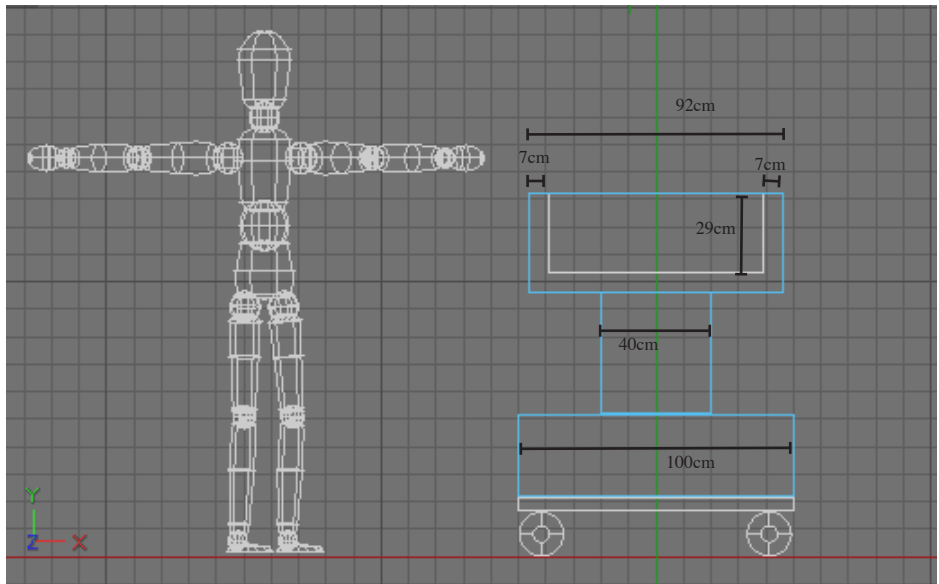
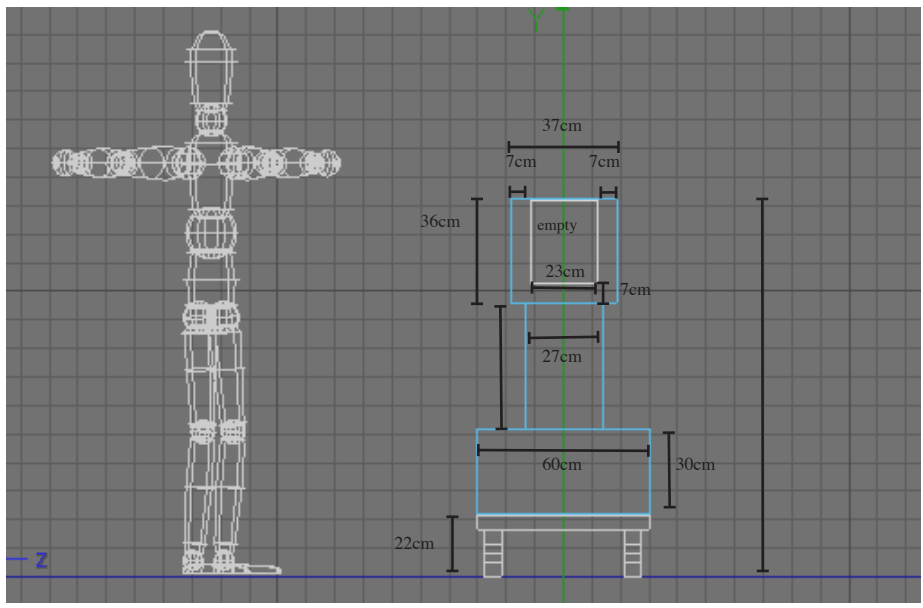
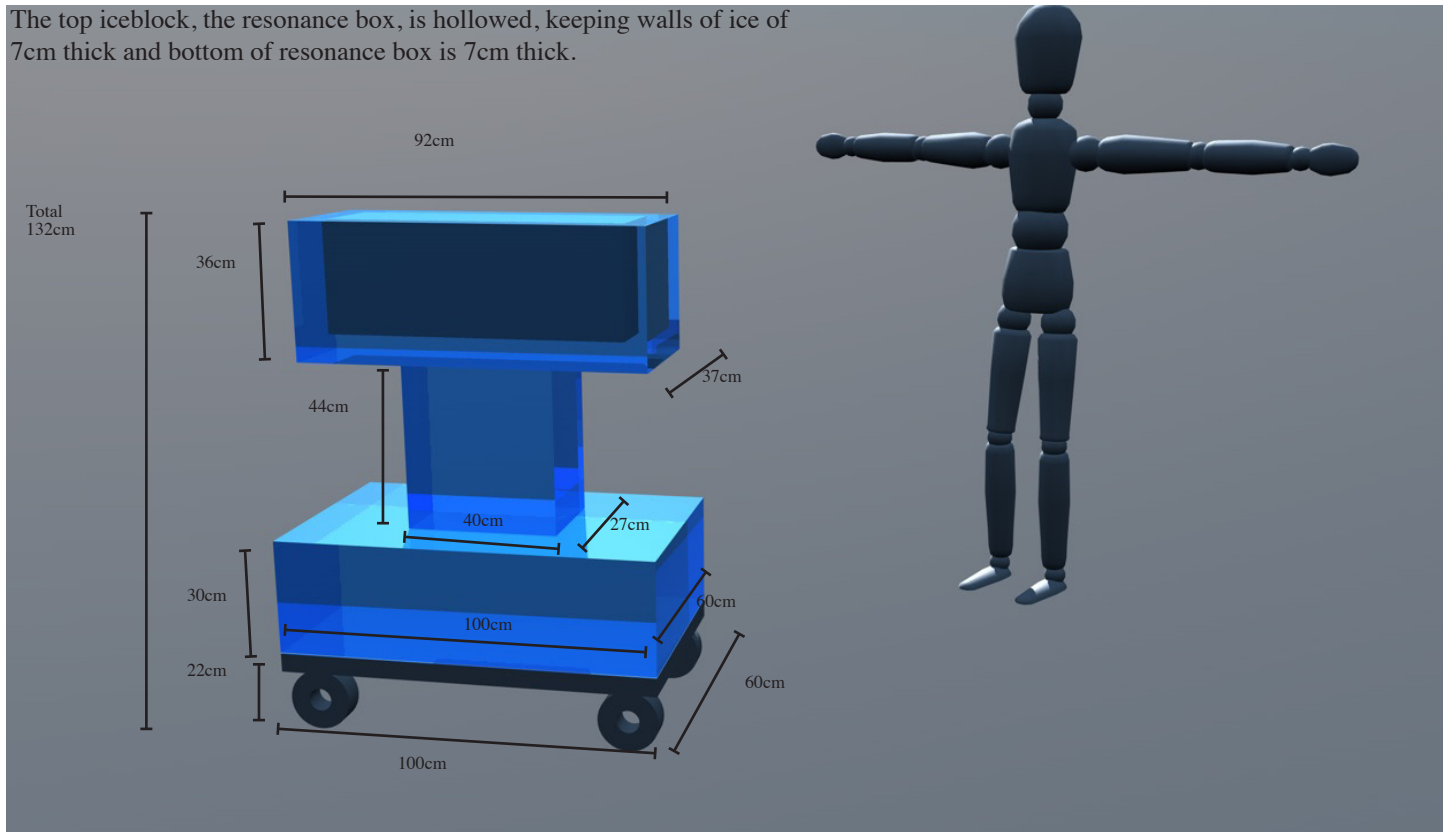
DETAILS for each structures.

TERJE / PILAR 冰柱



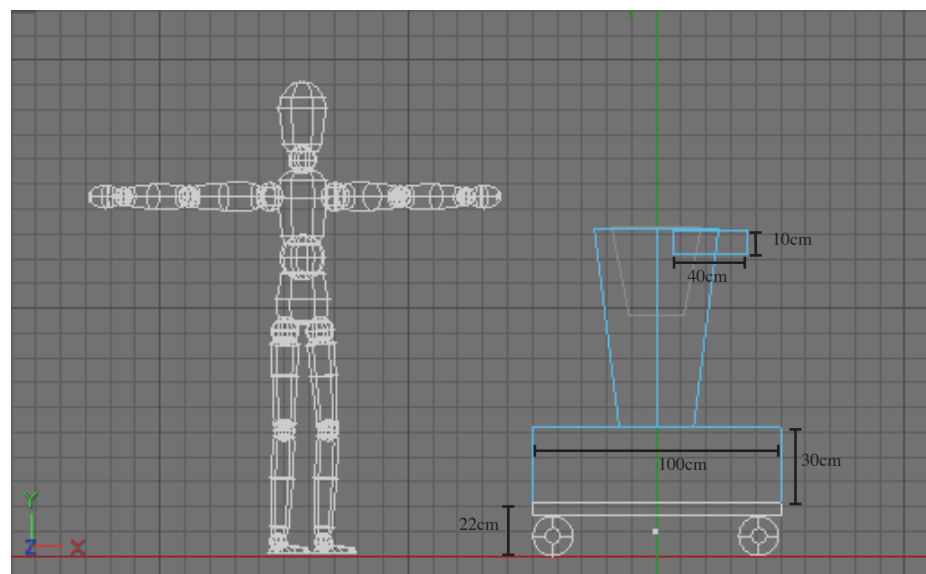
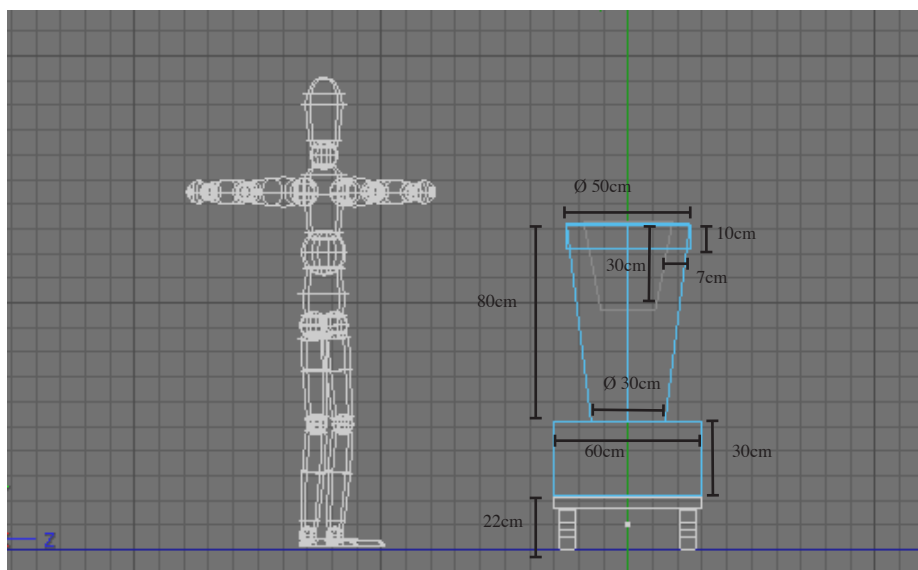
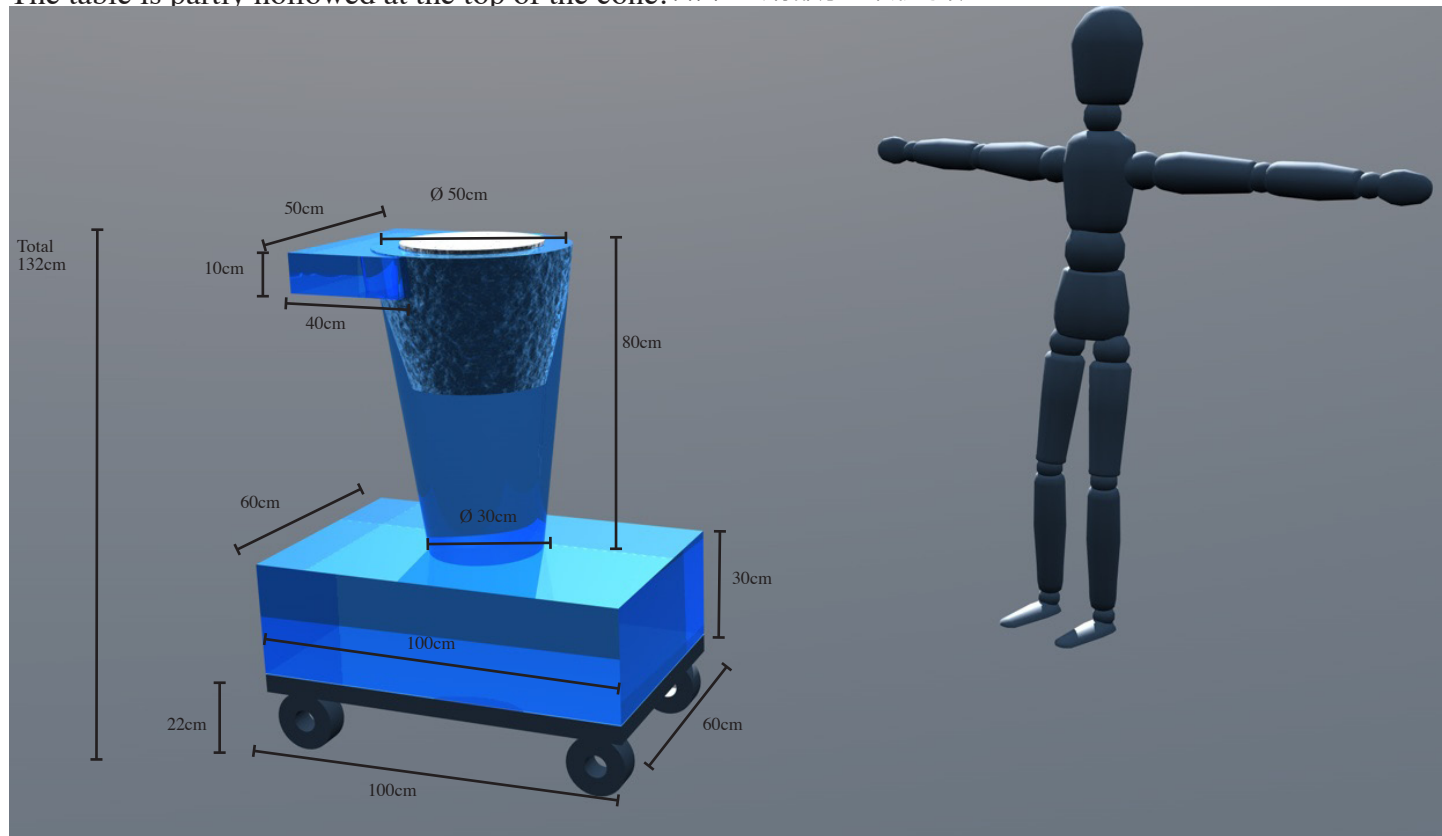
TERJE / ICEOFON 冰木琴

The top iceblock, the resonance box, is hollow, keeping walls of ice of 7cm thick and bottom of resonance box is 7cm thick.

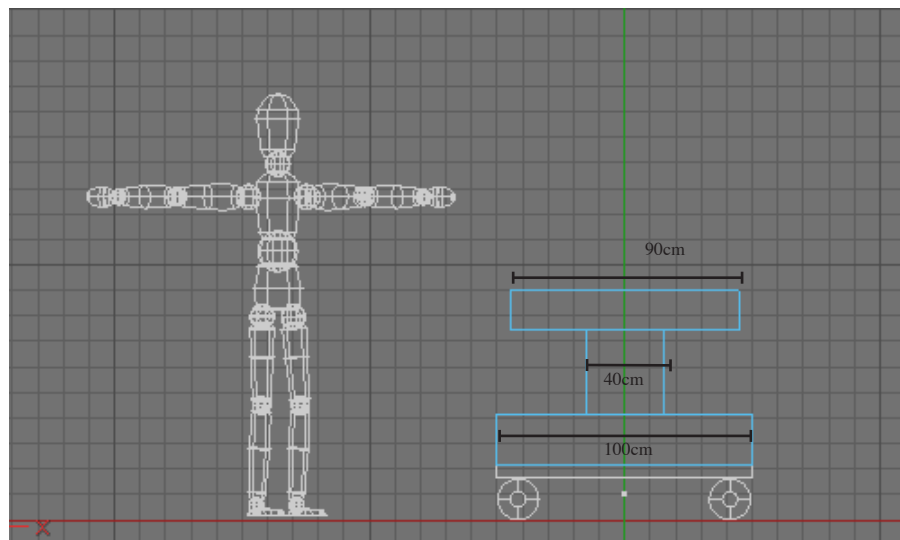
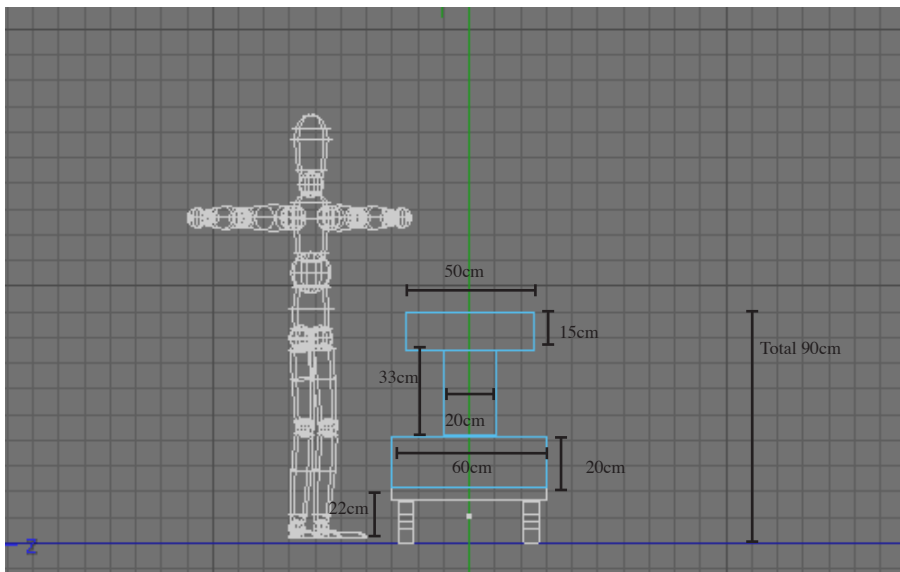
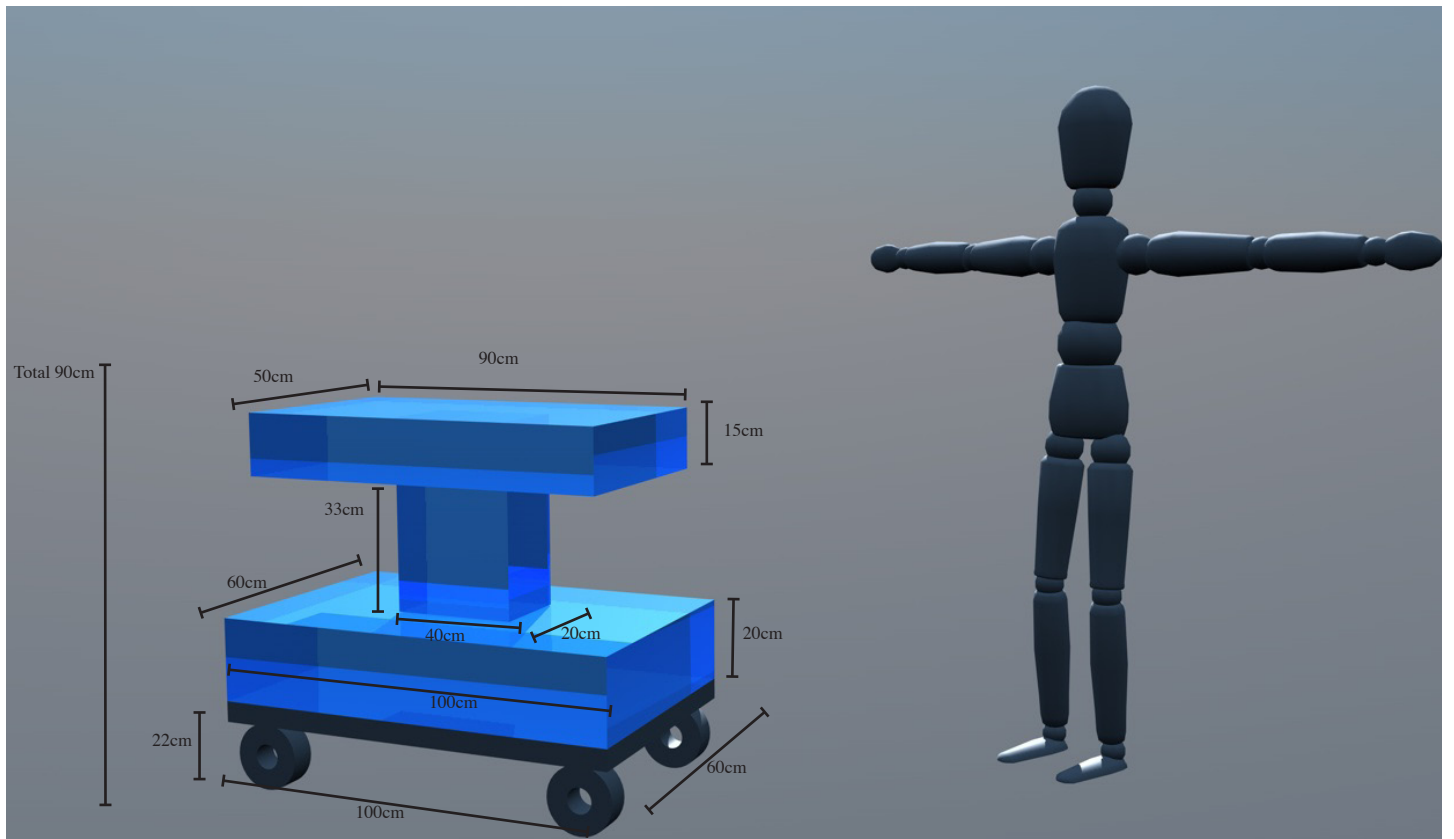


# TERJE / CONE TABLE 冰锥台

The table is partly hollowed at the top of the cone. 台面上会有部分呈锥形的镂空



# SINGER / TABLE 歌手用桌子



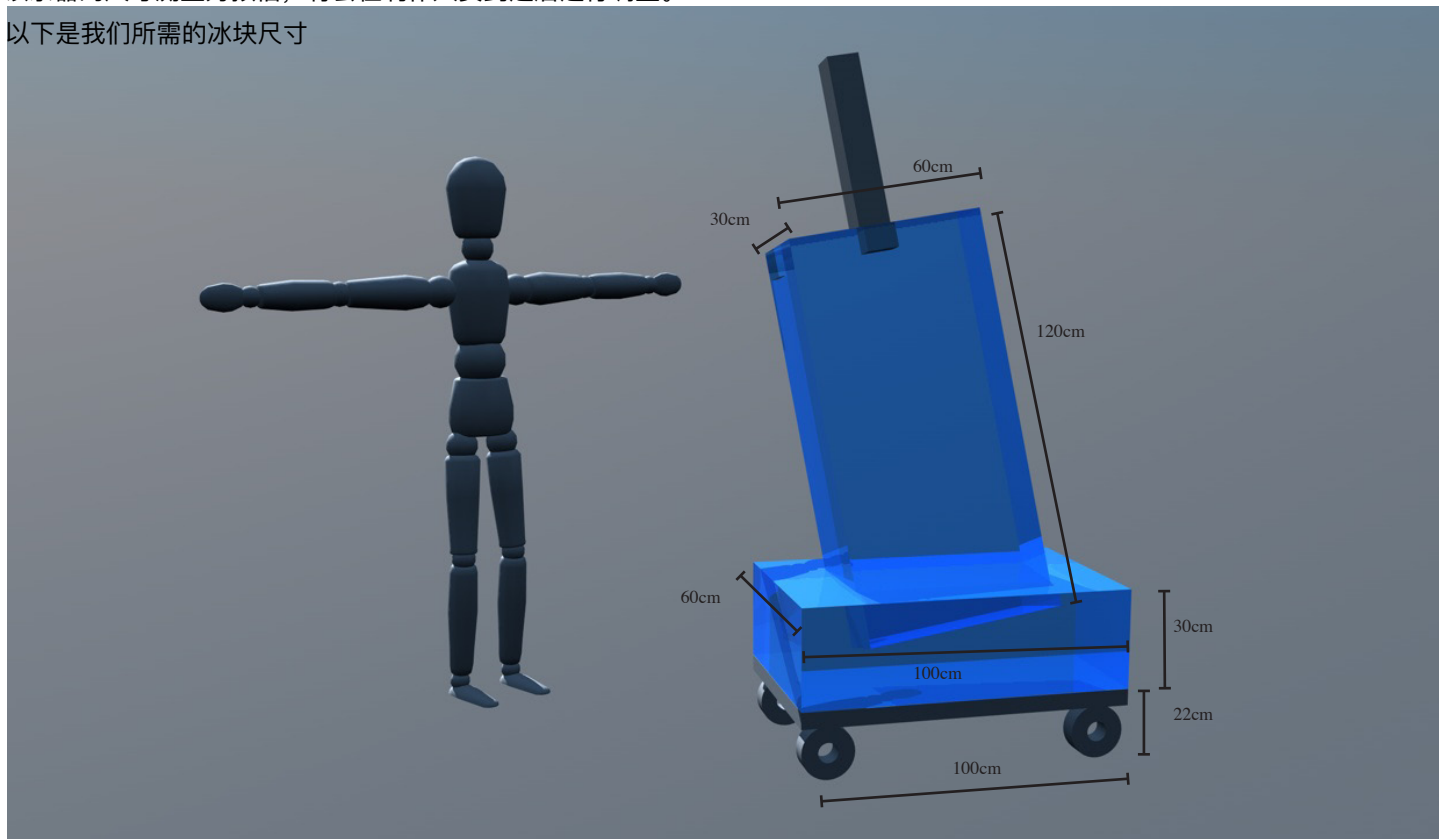
## ICE DOUBLE BASS 冰低音贝斯

The dimensions are an estimation, they are to be adjusted on site and as for the real design cut .

Here are the dimensions of the block of ice we will need to cut into.

该乐器的尺寸测量为预估，将会在制作人员到达后进行调整。

以下是我们所需的冰块尺寸



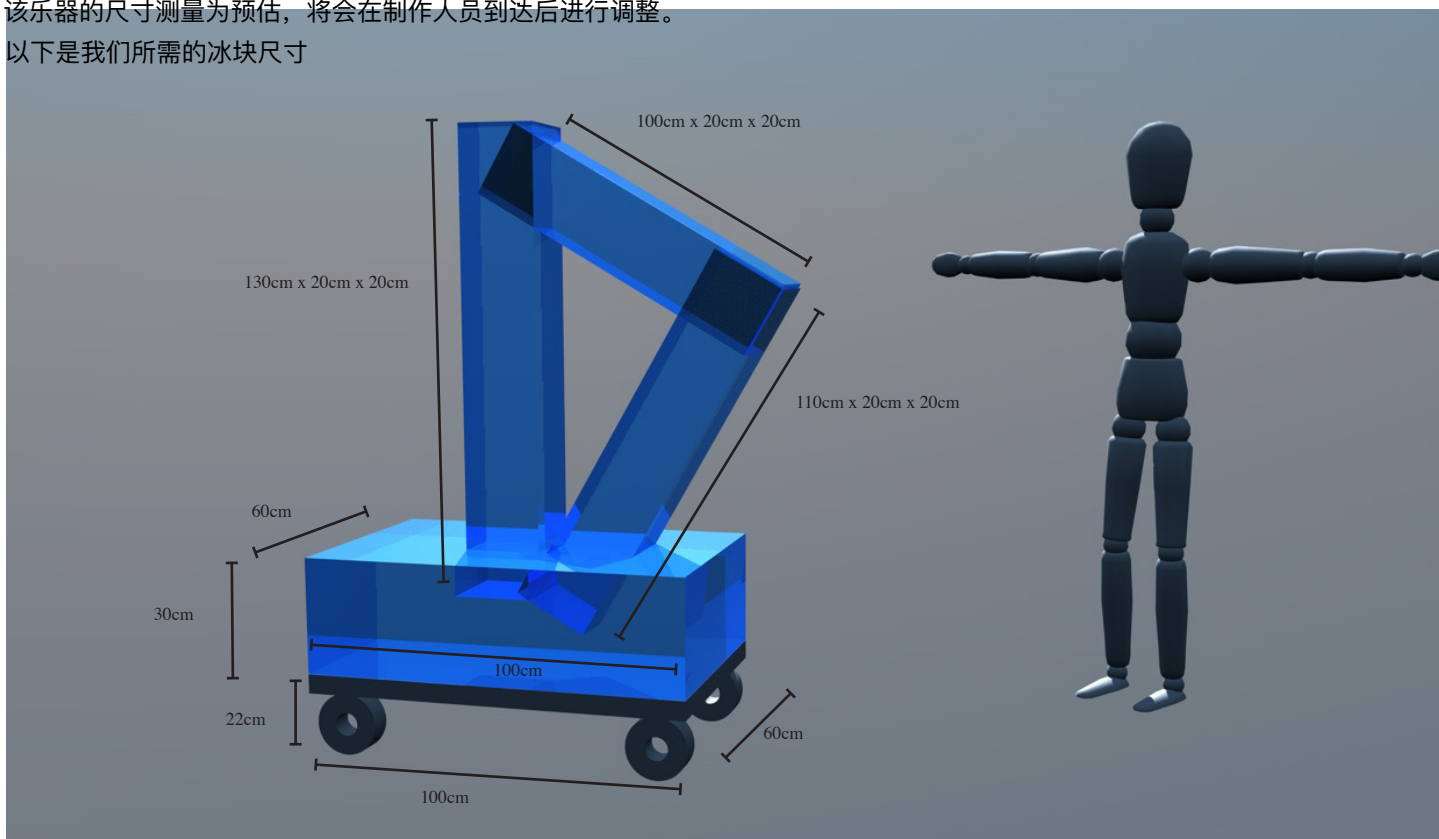
## ICE HARP 冰竖琴

The dimensions are an estimation, they are to be adjusted on site and as for the real design cut .

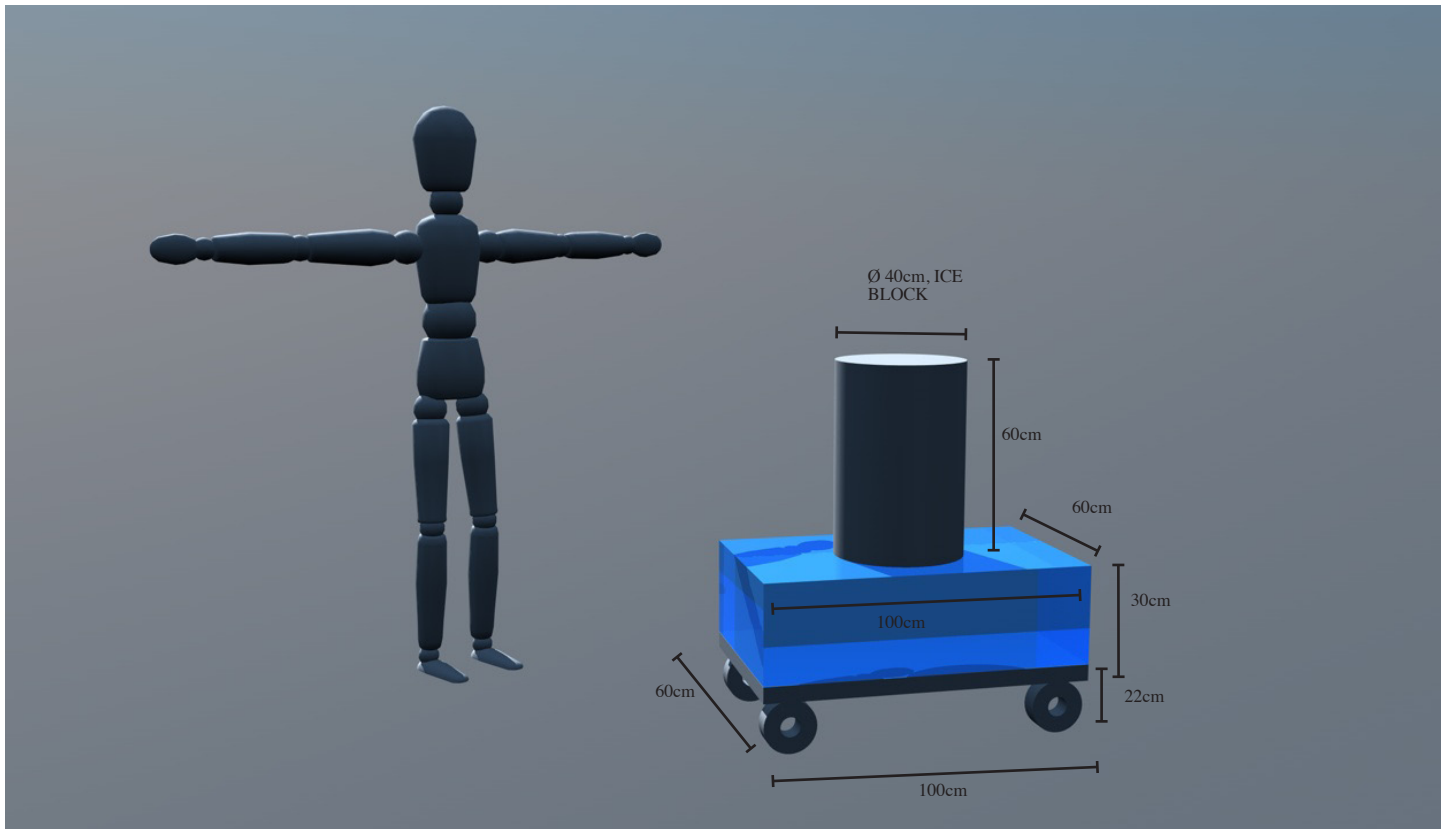
Here are the dimensions of the block of ice we will need to cut into.

该乐器的尺寸测量为预估，将会在制作人员到达后进行调整。

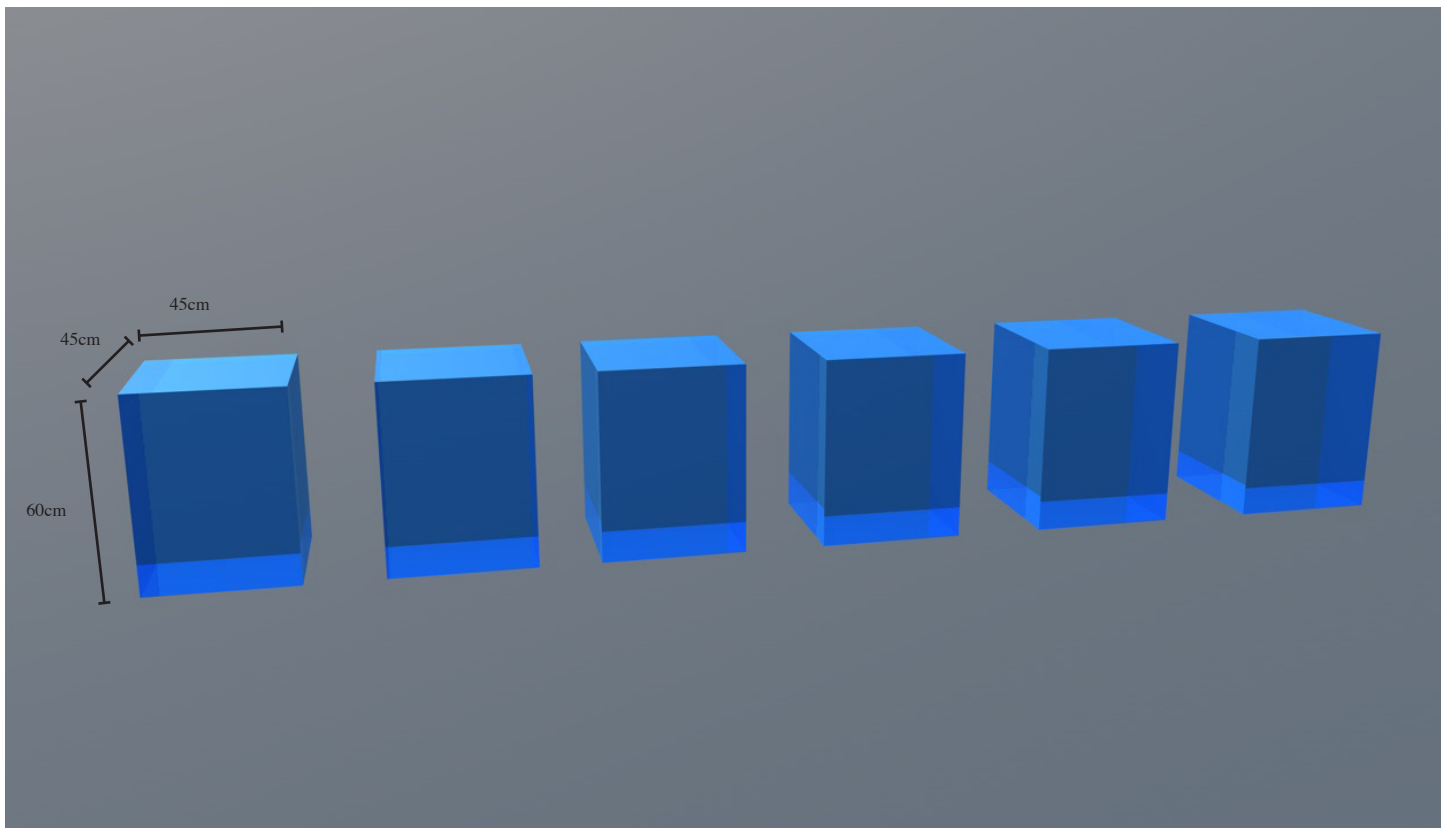
以下是我们所需的冰块尺寸



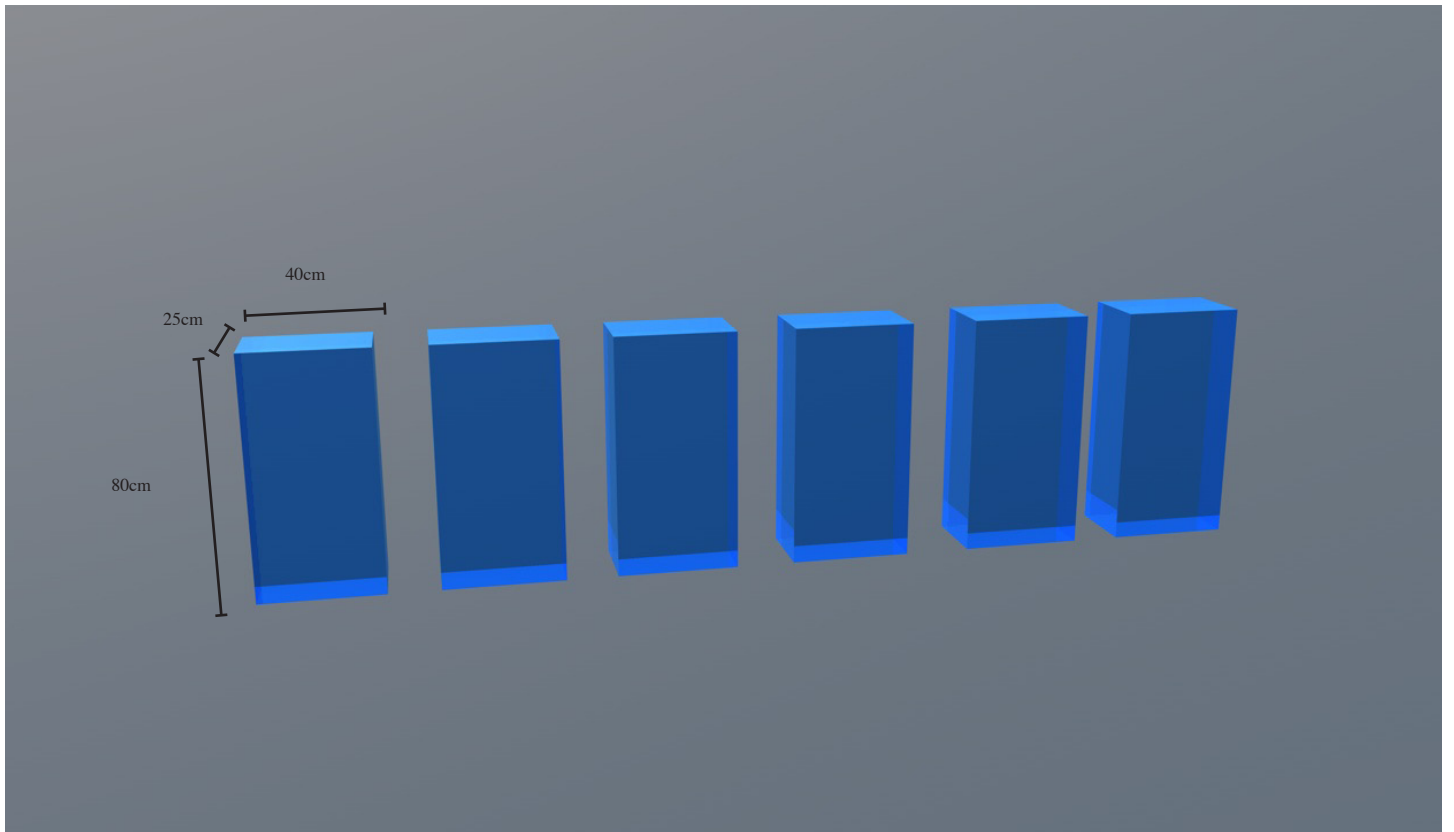
TERJE - SPECIAL ICE DRUM 特制冰鼓



TERJE - 6 Ice block same dimensions for 6 ice trumpets  
6个相同尺寸的冰块，放置6个冰小号用。



TERJE - 6 Ice blocks same dimensions for 6 ice Large Ram's Horn  
6个相同尺寸的冰块，放置6个大的冰羊角钩（乐器）用。



TERJE - 6 Ice blocks same dimensions for 6 ice Small Ram's Horn  
6个相同尺寸的冰块，放置6个小的冰羊角钩（乐器）用。

